



Microsoft SharePoint Server 2010 Insights

SharePoint 2010 is The Business Collaboration Platform for the Enterprise and the Web that enables you to connect and empower people through an integrated and rich set of features that can be deployed as Intranet, Extranet or Internet-facing solutions.

Robust Business Intelligence (BI) capabilities within SharePoint Server 2010 helps organizations manage and access both structured and unstructured data, providing you with the ability to empower your decision makers, improve organizational effectiveness, and enable IT efficiency.

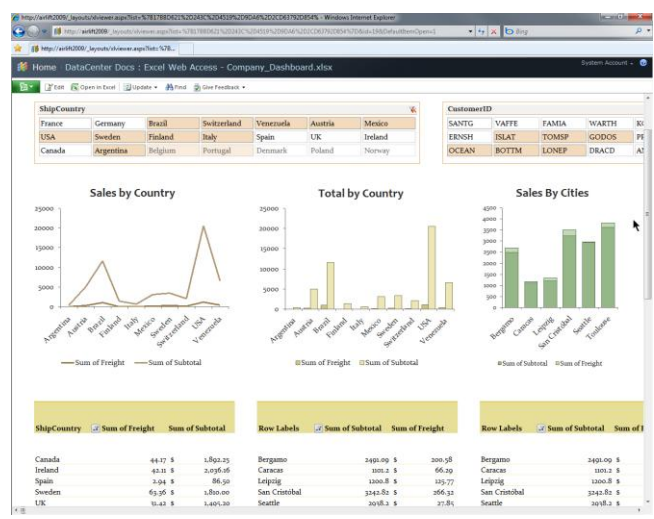
Empower Decision Makers

Ability to Create, Access, and Share Information Seamlessly and Easily.

- **Self Service:** Empower all users to discover and manage their aspect of the business with the right information themselves, using only a browser
- **Work with Structured and Unstructured Information:** Easily find and work with structured and unstructured information within the same environment
- **Share and Collaborate:** Use familiar tools to create and share information seamlessly



Team Dashboard in SharePoint 2010



Excel Services SharePoint 2010

Improve Organizational Effectiveness

Access the Right Information to Translate Strategy into Action and Enable Accountability

- **Accountability:** Manage, drive and define organizational success by aligning to key metrics and strategy with a single version of the truth
- **Transparency:** Providing trusted access to the right information to the right people at the right time
- **Discoverability:** Enabling users to find the right information across all data sources and content types

Enable IT Efficiency

Create and maintain the infrastructure to effectively drive BI to all users, inside and outside the firewall BI with SharePoint 2010.

- **Enterprise-Ready Platform:** Scale up and scale out with a highly available, secure, and interoperable platform with a unified architecture, inside and outside the firewall
- **Robust Infrastructure Investments:** Ensure performance and increase reliability with powerful system management tools and features
- **Increased Developer Effectiveness:** Easily create applications from a single development platform to meet changing business requirements



Key Supporting Features

SharePoint 2010 provides a number of robust supporting features to enhance BI throughout your organization.

Excel Services

Excel Services makes it simple to use, share, secure, and manage Microsoft Office Excel 2007 workbooks as interactive reports in a consistent way throughout the enterprise.

Visio Services

Visio Services in SharePoint 2010 provides the capability to render Visio diagrams and charts within the browser. Business users can use one of the existing out-of-the-box filter Web Parts to apply filtering criteria to a diagram to restrict what is and is not rendered.

PerformancePoint Services, Dashboards and Scorecards

PerformancePoint Services is a balanced scorecard and dynamic dashboard tool that allows power users/IT to create dynamic and highly interactive dashboards that display strategy to operations.

Chart Web Parts

Interact with data, slice and dice key performance indicators and analytics, and create their own dashboards using excel or the new chart Web Parts.

Status Indicator Lists

Status Indicator Lists now contain rich Key Performance Indicator (KPI) details highlighting ownership, date stamps, and thresholds providing complete transparency into key strategic initiatives and processes.

Business Connectivity Services (BCS)

BCS allows you to create SharePoint applications that bring external data into the Office system, extending the rich Office user experience and SharePoint collaboration capabilities to business data and processes.

The Microsoft BI Platform



SharePoint 2010 is a key component of the Microsoft BI platform, and enables your organization to realize a number of important benefits:

- **Connect and empower people** by letting them work together in ways that are most effective for them.
- **Cut Costs with a unified infrastructure** that offers enterprise-scale manageability and availability.
- **Rapidly respond to business needs** with dynamic and easily deployed solutions.

For More Information

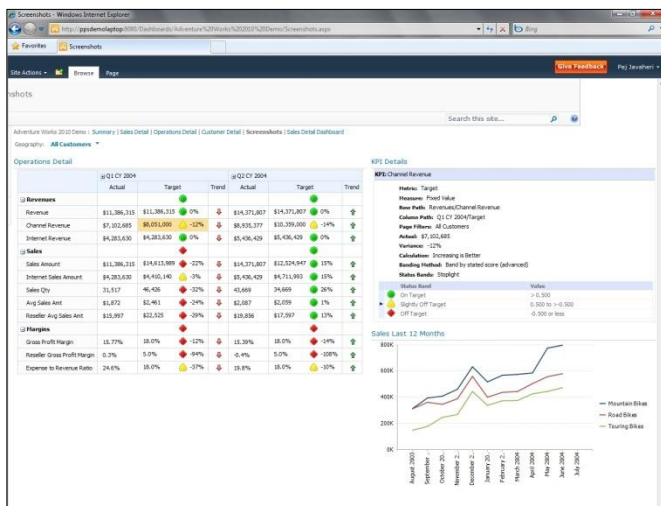
Learn more about Business Intelligence in SharePoint 2010 at: <http://sharepoint.microsoft.com/product/capabilities/bi/Pages/default.aspx>

Learn more about Microsoft SharePoint 2010 at: <http://sharepoint.microsoft.com>

This document is for informational purposes only. MICROSOFT MAKES NO WARRANTIES, EXPRESS OR IMPLIED, IN THIS SUMMARY.

The example companies, organizations, products, domain names, e-mail addresses, logos, people, places, and events depicted herein are fictitious. No association with any real company, organization, product, domain name, e-mail address, logo, person, place, or event is intended or should be inferred.

© 2009 Microsoft Corporation. All rights reserved. Microsoft, Active Directory, Excel, FrontPage, Groove, the Office logo, SharePoint, SQL Server, Visual Studio, Windows, and the Windows logo are either registered trademarks or trademarks of the Microsoft group of companies in the United States and/or other countries. All other trademarks are property of their respective owners.



Scorecard with KPI Details in SharePoint 2010